

2007 ANNUAL REPORT

JUVENILE DIVISION,
COMMON PLEAS COURT
OF MONTGOMERY COUNTY

JUDGE NICK KUNTZ

JUDGE ANTHONY CAPIZZI

COURT LOCATIONS:

JUVENILE JUSTICE CENTER

380 West Second Street • Dayton, Ohio 45422

CENTER FOR ADOLESCENT SERVICES

333 Access Road • New Lebanon, Ohio 45345

JUDGE FRANK W. NICHOLAS RESIDENTIAL TREATMENT CENTER FOR YOUTH

5581 Dayton-Liberty Road • Dayton, Ohio 45418

JUVENILE PROBATION

3501 Merrimac Avenue • Dayton, Ohio 45405

TO THE CITIZENS OF MONTGOMERY COUNTY

During 2007, some of the Montgomery County Juvenile Court accomplishments and changes include:

SUCCESS OF RE-ENTRY COURT

Starting in December of 2005, the Judges began conducting hearings on all youths released on parole by the Ohio Department of Youth Services (ODYS). Parole officers present proposed terms of release for these youths and secure the attendance of the parents or custodians at the hearings. The Judges approve the plans, supplement the terms of the plans or deny the releases of these youths. The Re-Entry Court was one of the first in Ohio to integrate offenders back into the community and ensure that the parole plans were more time-specific and multi-treatment dimensional. Since the beginning of Re-Entry Court two years ago, revocations and recommitments of ODYS parolees have dropped 64%.

CONTINUATION OF THE LIFE PROGRAM

Through the joint efforts of the ADAMHS Board, Juvenile Court, South Community, Inc. and Samaritan Behavioral Healthcare, Inc. dba CrisisCare, the LIFE (Learning Independence & Family Empowerment) Program was developed as an intensive mental health treatment program for girls and their parents/caregivers. This project is an evidence based clinical treatment and intervention model, entitled, "Functional Family Therapy (FFT)," that includes intensive home based treatment, juvenile justice programming, family mentoring and other community supports through interagency care planning and provision of services. The LIFE Project began June 19, 2006. This program was expanded in 2007 to serve 45 more girl offenders. Similarly, in January 2008 this group collaborated once again to expand the program. It will hopefully begin in May 2008 and provide Functional Family Therapy to 45 boys annually.

ACCREDITATION/RE-ACCREDITATION BY THE AMERICAN CORRECTIONAL ASSOCIATION (ACA) OF JUVENILE COURT PROGRAMS

In the first accreditation of the Court's Center for Adolescent Services (CAS), CAS received 100% compliance in both ACA's mandatory and non-mandatory standards. On January 14, 2008, CAS was officially awarded national accreditation by the American Correctional Association at its winter conference. ACA also re-certified the Court's Probation Services Department and the Nicholas Residential Treatment Center for Youth (NRTC). Probation Services received 100% compliance in both ACA's mandatory and non-mandatory standards. NRTC received 100% compliance in ACA's mandatory standards and 98% compliance in the non-mandatory standards. Because of the move

to the new Juvenile Justice Center, ACA will not be examining the Detention Services Department until the fall of 2008.

CONSTRUCTION OF THE JUVENILE JUSTICE CENTER (JJC) COMPLETED

Construction of the Juvenile Justice Center was completed in December of 2007. The Montgomery County Juvenile Court held its ribbon cutting ceremony for this new facility on January 3, 2008. Over 300 people attended this ceremony, including county and city officials, community leaders, state officials and court staff. With the ceremony completed, the move to the new facility officially began that afternoon with the move of youths from the correctional treatment program at the Dora Lee Tate Center to the JJC. The entire move of Court departments and programs took place in approximately two weeks.

This new Montgomery County Juvenile Justice Center (JJC) has added its shape to the Dayton skyline. With the opening of the JJC, this is the first time that all magistrates are in the same building and have immediate access to the Clerk's Office of the Juvenile Court. JJC has integrated all of the Court functions found at three different locations (the Family Court Center, the Reibold building and the Dora Lee Tate Youth Center) into one juvenile justice complex. It has consolidated the legal operations of the Court (formerly in two different downtown locations), Detention Services (including Detention and its Dora Lee Tate Center's corrections program), the Intervention Center, the Clerk's Office operations and other administration programs into one building. In addition to the physical relocation of these staffs, the new Center will increase the capacity of Detention Services from 96 beds (72 detention beds and 24 correction beds) to 144 beds (108-bed capacity in Detention and 36-bed capacity in Corrections) to better serve the youths and the community.

For a detailed perspective on the development of the Juvenile Justice Center, turn to pages 50 – 51.



JUVENILE JUSTICE CENTER
380 West Second Street • Dayton, Ohio 45422

MISSION STATEMENT

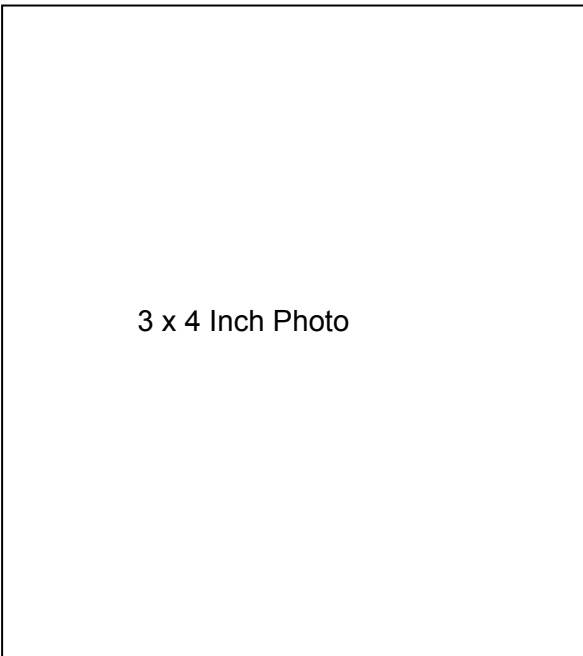
We are a Court of law dedicated to the task of upholding the Constitution and administering the laws of our land in a just and equal manner. We must strive to provide individualized justice for our children and protect our community, carefully balancing the interests of both. We believe there must be consequences for violation of the laws and that treatment begins with legal consequences. These consequences are intended to teach one responsibility and accountability for their actions; yet our goal is not to punish but to rehabilitate whenever rehabilitation can be effected without endangering the community.

Goals:

We are a Juvenile Court and, although protecting children is everyone's responsibility, we must be the catalyst in rallying the entire community toward that end through the following:

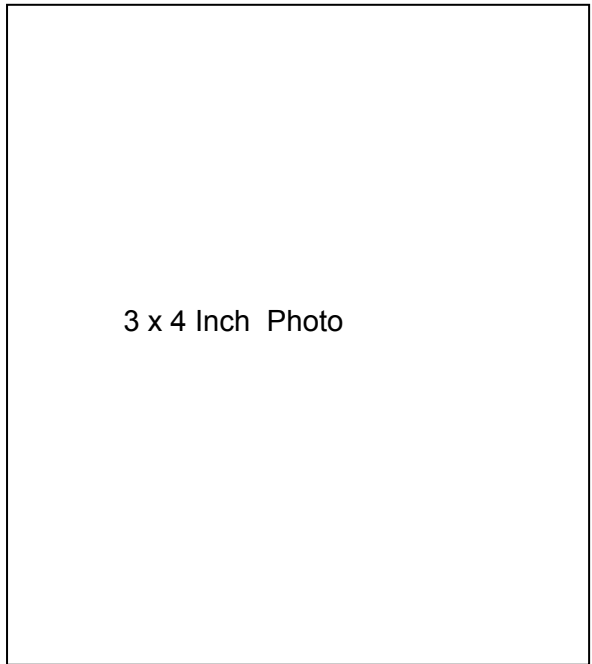
- Be a leader in the effective and cost-efficient utilization of community resources for the treatment of children and families;
- Provide for the protection of the community through just and speedy consequences;
- Be sensitive and responsive to individual victims and their families;
- Provide individualized justice for the offenders;
- Protect the abandoned, neglected and abused and assess and seek treatment for children in need;
- Hold those accountable who fail to meet their obligations as parents, guardians or custodians;
- Demand high professional standards for ourselves and make every effort possible to demand the same standards from other government agencies and service providers.

We must pursue these goals vigorously and honestly with the utmost respect for the rights of all our citizens.



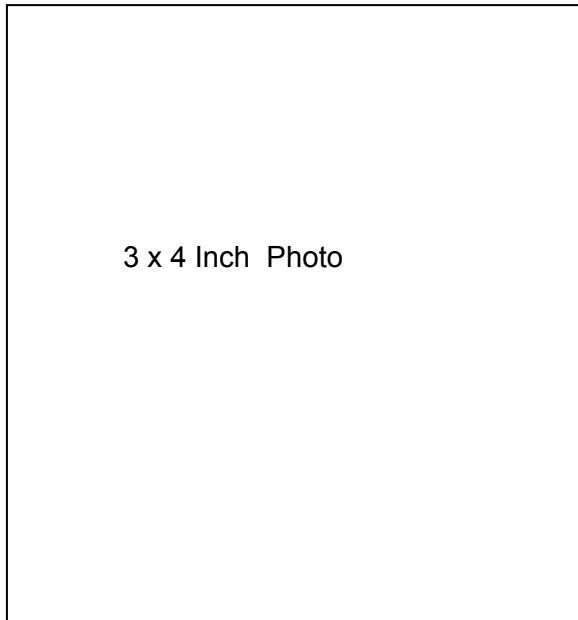
3 x 4 Inch Photo

**JUDGE NICK KUNTZ,
ADMINISTRATIVE JUDGE
(937) 225-4125
kuntzn@mcoho.org**



3 x 4 Inch Photo

**JUDGE ANTHONY CAPIZZI
(937) 496-6602
capizzia@mcoho.org**



3 x 4 Inch Photo

**JAMES D. COLE,
COURT ADMINISTRATOR
225-4262
colej@mcoho.org**

REFERRAL SOURCES

THE FOLLOWING OUTSIDE AGENCY REFERRAL SOURCE INFORMATION IS DERIVED FROM ALL COMPLAINTS ON CHILDREN EXCEPT TRAFFIC REFERRALS.

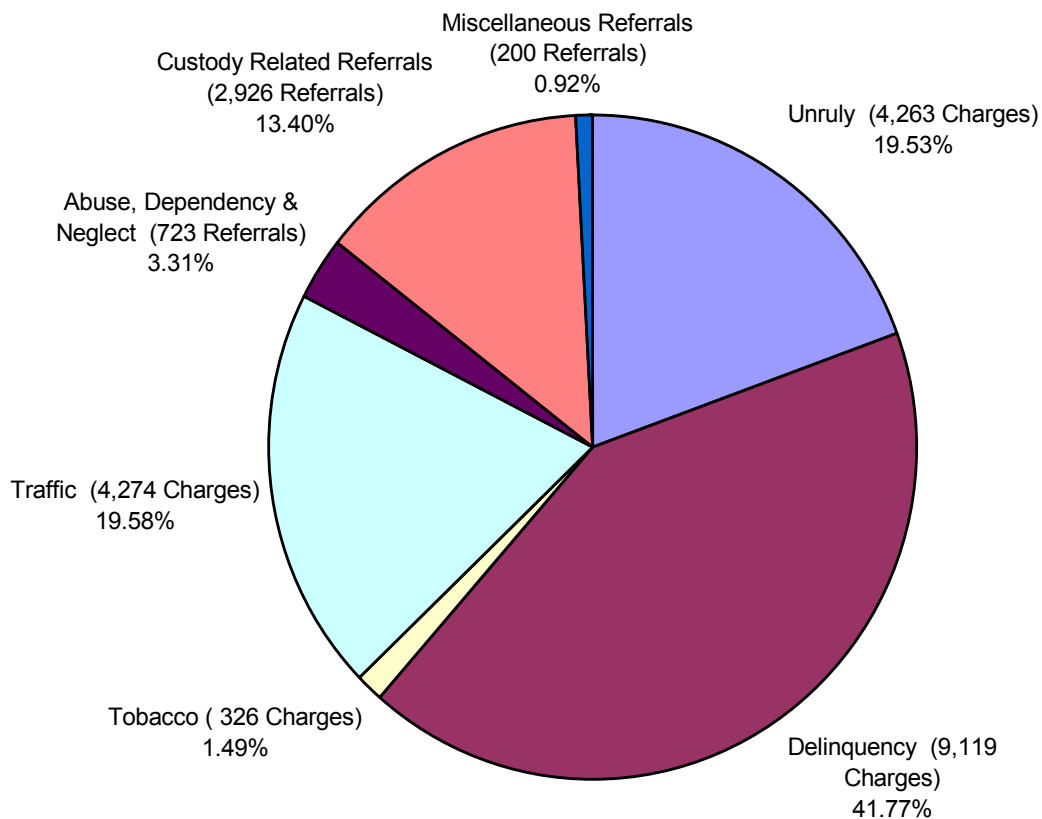
Law Enforcement Agencies	Number of Referrals	Law Enforcement Agencies	Number of Referrals
Sheriff	597	Moraine	338
Ohio State Patrol	3	New Lebanon	108
Brookville	28	Oakwood	15
Butler Township	35	Perry Township	10
Centerville	370	Riverside	312
Clay Township	9	Trotwood	753
Clayton	90	Union	97
Dayton	4,479	Vandalia	163
Englewood	190	West Carrollton	199
German Township	14	Other Police Departments	3
Germantown	100	Five Rivers MetroParks	25
Huber Heights	739	Dayton Airport Police	8
Jackson Township	17	Sinclair Community College Police	3
Kettering Police	599	U.S. Secret Service	1
Miami Township	669	University of Dayton Police	57
Miamisburg	353	Wright Patterson Air Force Base Police	12
TOTAL: 10,396			
Other Sources	Number of Referrals	Other Sources	Number of Referrals
Agencies:		School Districts (Continued):	
Transferred from Other Counties	703	New Lebanon	4
Children Services Division, Jobs and Family Services Dept.	668	Northmont	12
County Prosecuting Attorney	84	Northridge Local	23
Support Enforcement Agency/Attorney	1,137	Trotwood-Madison	37
		Valley View	11
School Districts:		Vandalia-Butler	21
Brookville Local	1	West Carrollton	32
Centerville	33	Charter Schools	104
Dayton Public Schools	233		
Jefferson Township Local	3	Other Sources:	
Huber Heights	24	Parents or Relatives	212
Kettering	30	Attorneys	694
Mad River Local	15	Other	45
Miamisburg	67	Pro Se	1,235
Montgomery County	22		
TOTAL: 5,450			

JUVENILE CHARGES

THE JUVENILE DIVISION OF THE MONTGOMERY COUNTY COURT OF COMMON PLEAS IS CHARGED WITH THE RESPONSIBILITY OF HANDLING CASES ON DELINQUENT AND UNRULY CHILDREN AS WELL AS THOSE CHARGED WITH TRAFFIC OR TOBACCO VIOLATIONS. THE COURT MUST ALSO MAKE JUDICIAL DETERMINATION RELATING TO DEPENDENT, NEGLECTED AND ABUSED CHILDREN.

2007 JUVENILE CHARGES (REFERRALS)*

Total Referrals: 21,831



- The 2007 chart reflects an expansion in the breakdown of juvenile charges and referrals.

UNRULY YOUTH

FAMILY STATUS OF UNRULY YOUTH BY RACE AND SEX

	BLACK		WHITE		OTHER		UNKNOWN		TOTAL		GRAND TOTAL
	M	F	M	F	M	F	M	F	M	F	
Both Parents	55	39	130	97	12	7	0	2	197	145	342
Mother Only	462	357	265	251	21	18	6	3	754	629	1,383
Father Only	50	26	76	43	5	4	0	1	131	74	205
Mother & Stepfather	49	23	54	44	1	1	0	0	104	68	172
Father & Stepmother	13	1	19	15	1	1	1	0	34	17	51
Stepfather Only	0	0	0	0	0	0	0	0	0	0	0
Stepmother Only	0	2	1	0	0	0	0	0	1	2	3
Foster Home, Relative or Non-Relative	78	70	57	52	3	2	1	1	139	125	264
Group Home	16	6	14	3	0	0	0	0	30	9	39
Guardian	59	80	34	37	1	0	0	0	94	117	211
Institution	1	4	1	1	1	0	0	0	3	5	8
Independent Living	0	2	2	3	0	0	0	0	2	5	7
Unknown	20	24	15	14	1	1	1	0	37	39	76
Total	803	634	668	560	46	34	9	7	1,526	1,235	2,761

UNRULY CHARGES BY AGE AND GENDER

	11 & Under		12-13		14-15		16 & Over		TOTAL		GRAND TOTAL
	M	F	M	F	M	F	M	F	M	F	
Truancy	16	13	72	63	173	150	286	196	547	422	969
Runaway	6	5	45	45	145	208	287	356	483	614	1,097
Curfew	2	1	25	10	127	75	387	171	541	257	798
Other Unruly Behavior	40	16	108	62	284	182	321	386	753	646	1,399
Total	64	35	250	180	729	615	1,281	1,109	2,324	1,939	4,263

UNRULY CHARGES BY RACE

Referral Reason	Black	White	Other	Unknown	Total
Truancy	538	398	28	5	969
Runaway	768	300	27	2	1,097
Curfew	364	417	16	1	798
Other Unruly Behavior	644	708	39	8	1,399
TOTAL:	2,314	1,823	110	16	4,263

NON-JUDICIAL DISPOSITIONS IN UNRULY CHARGES

DISPOSITIONS ORDERED:	
Ordered:	
Admonished	253
Work Program Diversion	186
Dismissed Without Prejudice	6
Fast Forward Program Referral	3
Chores Ordered	43
Restitution/Community Service	5
Other Community Service/Restitution	46
Parent Enforced House Arrest	4
Refer to Better Business Bureau's "Life Rules Program"	26
Power Club Referral	19
Probation Referral for Appropriate Action	668
Ordered to Attend School	227
Refer to Mediation	91
Write a Letter of Apology	97
Write an Essay	136
Treatment:	
Mental Health Assessment	79
Counseling	33
Residential Alternative Program (RAP)	23
Urinalysis	63

These are the principal non-judicial dispositions made on unofficial charges (referrals) in case reviews. A charge can have more than one disposition.

JUDICIAL DISPOSITIONS IN UNRULY CHARGES

DISPOSITIONS ORDERED:	
Ordered:	
Admonished	261
Dismissed	392
Dismissed Without Prejudice	292
Court Costs	24
Fines	17
Chores Ordered	3
Application Rights or License Suspension	13
Restitution/Community Service	142
Other Community Service/Restitution	6
Ordered to Attend School	290
Transfer to Another County	8
Refer to Mediation	26
Write a Letter of Apology	16
Write an Essay	29
Treatment:	
Mental Health Assessment	141
Alcohol/Substance Abuse Assessment	100
Counseling	277
Probation Supervision	388
Urinalysis Ordered	138
Dora Tate Youth Center, Suspended Commitment	116
Dora Tate Youth Center	42
Residential Alternative Program (RAP)	1

This table includes the principal final dispositions ordered by the Court on official charges (referrals). A charge can have more than one disposition.

DELINQUENT YOUTH

FAMILY STATUS OF DELINQUENT YOUTH BY RACE AND SEX

	BLACK		WHITE		OTHER		UNKNOWN		TOTAL		GRAND TOTAL
	M	F	M	F	M	F	M	F	M	F	
Both Parents	88	38	341	143	23	8	3	1	455	190	645
Mother Only	674	417	494	331	21	14	3	0	1,192	762	1,954
Father Only	76	32	178	79	8	3	0	0	262	114	376
Mother & Stepfather	58	28	102	41	2	2	1	0	163	71	234
Father & Stepmother	18	3	29	16	1	2	1	0	49	21	70
Stepfather Only	0	0	1	0	0	0	0	0	1	0	1
Stepmother Only	1	1	0	0	0	0	0	0	1	1	2
Foster Home, Relative or Non-Relative	139	84	96	73	8	2	1	0	244	159	403
Group Home	31	6	21	5	0	0	0	0	52	11	63
Guardian	80	72	60	41	4	0	0	0	144	113	257
Institution	1	2	1	2	1	0	0	0	3	4	7
Independent Living	6	2	12	9	0	0	0	0	18	11	29
Unknown	33	26	80	45	7	4	4	2	124	77	201
Total	1,205	711	1,415	785	75	35	13	3	2,708	1,534	4,242

TOP FIVE DELINQUENCY CHARGES (EXCLUDING VIOLATIONS) IN 2007:

- THEFT
- DRUG ABUSE
- ASSAULTS
- RELATED CRIMINAL DAMAGING OFFENSES
- DOMESTIC VIOLENCE

DELINQUENCY CHARGES BY AGE AND GENDER

CHARGE CATEGORIES	11 & UNDER		12 - 13		14 - 15		16 & OVER		TOTAL MALE	TOTAL FEMALE	GRAND TOTAL
	M	F	M	F	M	F	M	F			
HOMICIDE											
MURDER	0	0	0	0	0	0	3	0	3	0	3
MANSLAUGHTER	0	0	0	0	0	0	0	0	0	0	0
RELATED HOMICIDE OFFENSES	0	0	0	0	0	0	1	0	1	0	1
ASSAULT & MENACING											
FELONIOUS & AGGRAVATED ASSAULTS	1	1	7	1	5	3	47	10	60	15	75
ASSAULTS (FELONY)	6	3	4	4	17	17	14	20	41	44	85
ASSAULTS (MISDEMEANOR)	27	9	38	26	99	65	154	148	318	248	566
OTHER RELATED ASSAULTS	0	0	0	0	1	0	1	1	2	1	3
MENACING & STALKING	6	3	16	9	55	17	69	30	146	59	205
KIDNAPPING & EXTORTION											
KIDNAPPING & RELATED OFFENSES	0	0	0	0	1	0	8	0	9	0	9
EXTORTION	0	0	0	0	0	0	0	0	0	0	0
SEXUAL OFFENSES											
RAPE	2	0	14	0	27	2	34	1	77	3	80
SEXUAL ASSAULTS (FELONY)	1	0	9	2	20	2	31	2	61	6	67
SEXUAL ASSAULTS (MISDEMEANOR)	0	0	0	0	2	0	9	2	11	2	13
PROSTITUTION	0	0	0	0	0	0	0	2	0	2	2
OBSCENITY	0	0	0	0	0	2	2	0	2	2	4
ARSON & RELATED OFFENSES											
ARSON	3	1	7	0	14	0	24	2	48	3	51
RELATED VANDALISM OFFENSES	1	0	4	2	11	1	28	4	44	7	51
RELATED CRIMINAL DAMAGING OFFENSES	20	2	40	80	111	50	184	49	355	181	536
ROBBERY, BURGLARY & TRESPASSING											
ROBBERY	0	0	3	1	40	2	89	7	132	10	142
BURGLARY	8	3	16	2	55	4	147	14	226	23	249
TRESPASSING	4	0	15	2	40	14	114	29	173	45	218
SAFECRACKING	0	0	0	0	0	0	4	0	4	0	4
THEFT & FRAUD											
GRAND THEFT OF MOTOR VEHICLE	0	0	0	0	9	1	23	3	32	4	36
THEFT	12	1	53	44	211	166	425	381	701	592	1,293
PASSING BAD CHECKS	0	0	0	0	0	0	0	3	0	3	3
MISUSE OF CREDIT CARDS	0	1	0	1	1	8	1	4	2	14	16
FORGERY	0	0	0	0	0	3	6	9	6	12	18

Continue on Next Page

DELINQUENCY CHARGES BY AGE AND GENDER (CONTINUED)

CHARGE CATEGORIES	11 & UNDER		12 - 13		14 - 15		16 & OVER		TOTAL MALE	TOTAL FEMALE	GRAND TOTAL
	M	F	M	F	M	F	M	F			
FRAUD	0	0	0	0	1	0	1	1	2	1	3
RECEIVING STOLEN PROPERTY (FELONY)	0	0	1	0	23	8	97	18	121	26	147
RECEIVING STOLEN PROPERTY (MISDEMEANOR)	1	0	7	2	22	11	39	21	69	34	103
GAMBLING	0	0	0	0	2	0	6	0	8	0	8
AGAINST PUBLIC PEACE											
INCITING, RIOT & RELATED OFFENSES	0	0	0	0	1	1	1	3	2	4	6
DISORDERLY CONDUCT	8	1	17	14	65	72	198	126	288	213	501
HARASSMENT	0	0	1	4	1	4	17	9	19	17	36
FALSE ALARMS	0	1	11	0	11	2	14	4	36	7	43
CROWD SAFETY	0	0	0	0	0	0	0	1	0	1	1
AGAINST FAMILY											
DOMESTIC VIOLENCE (FELONY)	0	0	6	1	8	7	19	9	33	17	50
DOMESTIC VIOLENCE (MISDEMEANOR)	11	2	37	26	78	67	155	108	281	203	484
OTHER OFFENSES AGAINST THE FAMILY	0	1	1	0	2	1	18	9	21	11	32
AGAINST JUSTICE & PUBLIC ADMINISTRATION											
BRIBERY & INTIMIDATION	0	0	0	2	0	0	2	2	2	4	6
PERJURY	0	0	0	2	4	12	25	15	29	29	58
OBSTRUCTING JUSTICE RELATED OFFENSES	0	0	11	11	59	33	211	103	281	147	428
WEAPONS CONTROL											
CARRYING CONCEALED WEAPONS (FELONY)	0	0	0	0	2	1	15	1	17	2	19
CARRYING CONCEALED WEAPONS (MISDEMEANOR)	1	0	2	0	8	1	28	4	39	5	44
POSSESSING CRIMINAL TOOLS (FELONY)	0	0	0	0	9	2	26	3	35	5	40
POSSESSING CRIMINAL TOOLS (MISDEMEANOR)	0	0	3	6	12	19	21	65	36	90	126
OTHER WEAPONS CONTROL OFFENSES (FELONY)	5	2	6	1	11	5	24	5	46	13	59
OTHER WEAPONS CONTROL OFFENSES (MISDEMEANOR)	0	2	4	0	6	1	10	0	20	3	23
PARTICIPATING IN A GANG	0	0	0	0	0	0	0	0	0	0	0
DRUG OFFENSES											
DRUG TRAFFICKING	0	0	0	0	5	0	24	3	29	3	32
DRUG ABUSE	0	0	13	2	54	12	465	120	532	134	666
DRUG THEFT/DRUG SAMPLES	0	0	0	1	0	3	1	1	1	5	6
FEDERAL OFFENSES	0	0	0	0	0	0	0	0	0	0	0
LIQUOR VIOLATIONS	0	0	0	4	20	19	236	138	256	161	417
OTHER DELINQUENCY OFFENSES	1	0	1	0	8	2	18	7	28	9	37
LOCAL ORDINANCES	3	1	8	7	61	21	239	57	311	86	397
VIOLATIONS OF COURT ORDER	9	2	128	73	420	238	532	215	1,089	528	1,617
TOTALS	130	36	483	330	1,612	899	3,860	1,769	6,085	3,034	9,119

DELINQUENCY CHARGES BY RACE

CHARGE CATEGORIES	Black	White	Other	Unknown	Total
HOMICIDE					
MURDER	3	0	0	0	3
MANSLAUGHTER	0	0	0	0	0
RELATED HOMICIDE OFFENSES	0	1	0	0	1
ASSAULT & MENACING					
FELONIOUS & AGGRAVATED ASSAULTS	46	29	0	0	75
ASSAULTS (FELONY)	63	22	0	0	85
ASSAULTS (MISDEMEANOR)	308	244	13	1	566
OTHER RELATED ASSAULTS	1	2	0	0	3
MENACING & STALKING	97	104	4	0	205
KIDNAPPING & EXTORTION					
KIDNAPPING & RELATED OFFENSES	7	1	1	0	9
EXTORTION	0	0	0	0	0
SEXUAL OFFENSES					
RAPE	42	37	1	0	80
SEXUAL ASSAULTS (FELONY)	16	49	1	1	67
SEXUAL ASSAULTS (MISDEMEANOR)	6	7	0	0	13
PROSTITUTION	0	2	0	0	2
OBSCENITY	0	4	0	0	4
ARSON & RELATED OFFENSES					
ARSON	12	37	2	0	51
RELATED VANDALISM OFFENSES	13	37	1	0	51
RELATED CRIMINAL DAMAGING OFFENSES	224	303	7	2	536
ROBBERY, BURGLARY & TRESPASSING					
ROBBERY	113	27	2	0	142
BURGLARY	113	128	7	1	249
TRESPASSING	97	116	5	0	218
SAFECRACKING	0	4	0	0	4
THEFT & FRAUD					
GRAND THEFT OF MOTOR VEHICLE	15	20	1	0	36
THEFT	586	670	37	0	1,293
PASSING BAD CHECKS	2	1	0	0	3
MISUSE OF CREDIT CARDS	8	8	0	0	16
FORGERY	7	11	0	0	18
FRAUD	0	3	0	0	3
Continued on Next Page					

DELINQUENCY CHARGES BY RACE (CONTINUED)

REFERRAL REASON	Black	White	Other	Unknown	Total
RECEIVING STOLEN PROPERTY (FELONY)	102	44	1	0	147
RECEIVING STOLEN PROPERTY (MISDEMEANOR)	36	63	4	0	103
GAMBLING	8	0	0	0	8
AGAINST PUBLIC PEACE					
INCITING, RIOT & RELATED OFFENSES	5	1	0	0	6
DISORDERLY CONDUCT	257	224	16	4	501
HARASSMENT	9	26	0	1	36
FALSE ALARMS	27	14	2	0	43
CROWD SAFETY	1	0	0	0	1
AGAINST FAMILY					
DOMESTIC VIOLENCE (FELONY)	26	22	2	0	50
DOMESTIC VIOLENCE (MISDEMEANOR)	213	246	22	3	484
OTHER OFFENSES AGAINST THE FAMILY	6	25	1	0	32
AGAINST JUSTICE & PUBLIC ADMINISTRATION					
BRIBERY & INTIMIDATION	4	2	0	0	6
PERJURY	36	21	1	0	58
OBSTRUCTING JUSTICE RELATED OFFENSES	217	194	15	2	428
WEAPONS CONTROL					
CARRYING CONCEALED WEAPONS (FELONY)	17	2	0	0	19
CARRYING CONCEALED WEAPONS (MISDEMEANOR)	13	28	2	1	44
POSSESSING CRIMINAL TOOLS (FELONY)	20	15	5	0	40
POSSESSING CRIMINAL TOOLS (MISDEMEANOR)	61	62	3	0	126
OTHER WEAPONS CONTROL OFFENSES (FELONY)	24	33	2	0	59
OTHER WEAPONS CONTROL OFFENSES (MISDEMEANOR)	16	7	0	0	23
PARTICIPATING IN A GANG	0	0	0	0	0
DRUG OFFENSES					
DRUG TRAFFICKING	20	9	3	0	32
DRUG ABUSE	191	454	20	1	666
DRUG THEFT/DRUG SAMPLES	1	5	0	0	6
FEDERAL OFFENSES	0	0	0	0	0
LIQUOR VIOLATION	24	376	16	1	417
OTHER DELINQUENCY	11	25	0	1	37
LOCAL ORDINANCES	304	87	5	1	397
VIOLATION OF COURT ORDER	878	690	49	0	1,617
TOTAL:	4,306	4,542	251	20	9,119

NON-JUDICIAL DISPOSITIONS IN DELINQUENT CHARGES

DISPOSITIONS ORDERED:	
Ordered:	
Admonished	174
Work Program Diversion	275
Dismissed Without Prejudice	3
Restitution/Community Service	4
Other Community Service/Restitution	151
Ordered to Attend School	37
Homework/Chores Ordered	88
Referred to Mediation	296
Refer to Better Business Bureau's "Stop Shoplifting Program"	325
Refer to Better Business Bureau's "Life Rules Program"	51
Power Club Referral	31
Transferred to Another Jurisdiction	7
Write a Letter of Apology	276
Write an Essay	531
Treatment:	
Mental Health Assessment	79
SOAP Assessment	1
Counseling	54
Residential Alternative Program (RAP)	2
Urinalysis Ordered	117

Non-judicial dispositions are made on unofficial charges (referrals). A charge can have more than one disposition.

JUDICIAL DISPOSITIONS IN DELINQUENT CHARGES

DISPOSITIONS ORDERED:	
Ordered:	
Admonished	734
Application Rights or License Suspension Until Further Notice	137
Dismissed	1,721
Dismissed Without Prejudice	782
Fines	148
Court Costs	176
Work Program (Community Service/Restitution)	811
Other Community Service/Restitution	64
Continued On Next Page	

DISPOSITIONS ORDERED:	
Parent Enforced House Arrest	17
Ordered to Attend School	475
Modified Driving Privileges	7
Power Club Referral	2
Transferred to Another Jurisdiction	150
Emancipation of Child	10
Write a Letter of Apology	294
Write an Essay	89
Commitment:	
Center for Adolescent Services	62
Ohio Department of Youth Services (DYS)	143
DYS Revocation	46
DYS Suspended Commitment	397
Placement:	
Legal Custody	98
Temporary Custody	159
Temporary Custody to Children Services Board	31
Termination of Legal Custody	4
Termination of Temporary Custody	141
Treatment:	
Mental Health Assessments	666
Crisis Care Alcohol or Drug (AoD) Assessments	643
Sexual Offender Assessment	68
Drug Court	117
Counseling	1,826
Dora Lee Tate Youth Center	644
Dora Lee Tate Youth Center, Suspended Commitment	1,129
Nicholas Residential Treatment Center	16
Urinalysis Ordered	208
RAP (Residential Alternatives Program)	2
Probation Supervision	2,229
Continued on Probation	771

This table represents the principal final dispositions ordered by the Juvenile Court on official charges (referrals). A charge can have more than one disposition.

**YOUTH COMMITMENTS TO
THE OHIO DEPARTMENT OF YOUTH SERVICES (DYS)
AND
THE CENTER FOR ADOLESCENT SERVICES (CAS)**

YEAR	DYS COMMITMENTS	DYS REVOCATIONS*	DYS RE-COMMITMENTS**	CAS COMMITMENTS
2007	106	50	8	83
2006	100	55	11	78
2005	111	80	18	77
2004	132	57	11	56
2003	101	49	15	52
2002	107	56	17	37
2001	117	45	25	15
2000	146	55	23	-

*Youths who are on parole with DYS after their release from a DYS institution and are found guilty on a technical violation and returned to DYS for one to three months.

**Youths who are on parole with DYS after their release from a DYS institution and are found guilty of a new felony offense and committed to DYS for a term of six months or longer.

**MOTIONS TO TRANSFER DELINQUENCY CASES
TO ADULT COURT**

The Prosecutor's Office initiates the motions, which request the transfer of delinquency cases to the adult court for prosecution. A case can include more than one referral on a youth.

YEAR	BINDOVER MOTIONS FILED	MOTIONS GRANTED	MOTIONS DENIED OR WITHDRAWN
2007	35*	13	14
2006	31	22	9
2005	29	11	18
2004	23	6	17
2003	40	17	23
2002	38	11	27
2001	36	16	20
2000	43	19	24

* Eight Bindover Motions were pending at the end of 2007.

SCHOOL DISTRICT ATTENDING BY TYPE OF YOUTH*

SCHOOLS	Delinquent		Unruly	
	Male	Female	Male	Female
<u>PUBLIC SCHOOL DISTRICTS</u>				
BROOKVILLE	15	10	4	3
CENTERVILLE	129	92	34	26
DAYTON CITY SCHOOLS	981	562	703	586
HUBER HEIGHTS	177	96	75	65
JEFFERSON TOWNSHIP	18	9	14	9
KETTERING	162	79	81	63
MAD RIVER	84	44	38	20
MIAMISBURG	132	70	74	51
NEW LEBANON	38	12	9	10
NORTHMONT	103	37	37	23
NORTHRIDGE	51	28	31	24
OAKWOOD	13	7	0	2
TROTWOOD MADISON	111	52	82	43
VALLEY VIEW	38	18	19	8
VANDALIA-BUTLER	55	29	19	13
WEST CARROLLTON	105	63	59	52
<u>PRIVATE SCHOOLS</u>				
CHARTER SCHOOLS	235	170	169	164
OTHER SCHOOLS	20	9	7	2
<u>VOCATIONAL SCHOOLS</u>				
MIAMI VALLEY CAREER TECHNOLOGY	13	11	2	10
<u>OTHER</u>				
OUT OF SCHOOL	7	1	2	9
OUT OF COUNTY	161	99	53	41
UNKNOWN	60	36	14	11
MALE/FEMALE TOTALS:	2,708	1,534	1,526	1,235
GRAND TOTAL:	4,242		2,761	

* This table reflects the number of delinquent and unruly youths by school district and other school categories. If youths had both delinquent and unruly charges during 2006, these youths would be counted in both the delinquency and unruly columns.

JUVENILE TRAFFIC OFFENDERS

TRAFFIC REFERRALS BY AGE AND GENDER

11 & Under		12-13		14-15		16 & Over		TOTAL		GRAND TOTAL
M	F	M	F	M	F	M	F	M	F	
0	1	12	7	116	47	2,618	1,473	2,746	1,528	4,274

TRAFFIC REFERRALS BY RACE

Black	White	Other	Unknown	Total
1,288	2,881	98	7	4,274

JUDICIAL DISPOSITIONS ORDERED:	
Attitude Adjustment Driving Program	2
Admonished	398
Application Rights or License Suspension	119
Defensive Driving School	1
Driving Course Required	89
Weekend Intervention Program	3
Drive Alive Program	58
Dismissed	483
Dismissed Without Prejudice	123
Fines	3,149
Court Costs	2,794
License Suspended (In House)	46
License to Be Suspended by Bureau of Motor Vehicles	421
Temporary Driver's Permit Suspended	6
Modified Driving Privileges	386
Juvenile Court Work Program	8
Transfer to Another Jurisdiction	50
Probation for Supervision	82
Counseling	3
Dora Tate Program	1

This table represents the principal final dispositions ordered by the Juvenile Court.
A charge (referral) can have more than one disposition.

TOBACCO CHARGES (REFERRALS)

In 2001, the Tobacco Bill (Ohio Revised Code Section 2151.87) was enacted. This law expanded the offense of illegal distribution of cigarette or other tobacco products to children.

TOBACCO CHARGES BY AGE AND GENDER

11 & Under		12-13		14-15		16 & Over		TOTAL		GRAND TOTAL
M	F	M	F	M	F	M	F	M	F	
1	0	9	3	51	13	177	72	238	88	326

TOBACCO CHARGES BY RACE

Black	White	Other	Unknown	Total
88	228	4	6	326

JUDICIAL DISPOSITIONS ORDERED:	
Admonished	24
Work Program Community Service	2
Smoking Cessation Class	42
Dismissed	79
Dismissed Without Prejudice	127
Fines	176
Court Costs	87

This table represents the principal final dispositions ordered by the Juvenile Court. A charge (referral) can have more than one disposition.

ABUSED, DEPENDENT AND/OR NEGLECTED CHILD

REFERRAL REASON	TOTAL
Abuse	1
Abuse & Dependency	83
Abuse & Neglect	0
Abuse, Dependency & Neglect	52
Dependency	373
Dependency & Neglect	214
Neglect	0
Total:	723

JUDICIAL DISPOSITIONS ORDERED:	
Ordered:	
Dismissed	71
Dismissed Without Prejudice	42
Emancipation of Child	103
Motion Granted	424
Motion Denied	41
Motion Dismissed	19
Protective Supervision	217
Termination/Suspension of Child Support	52
Visitation According to Case Plan	204
Visitation Granted	128
Visitation Denied	6
Visitation As Agreed by Parties	146
Placement:	
Custody Remain With Parent	80
Permanent Custody	10
Temporary Custody	301
Legal Custody	100
Termination of Legal Custody	36
Termination of Temporary Custody	113
Temporary Custody to Children Services	82
Planned Permanent Living Arrangement Granted	3
Shared Parenting	4

This table represents the principal final dispositions ordered by the Juvenile Court. A charge (referral) can have more than one disposition.

CUSTODY RELATED REFERRALS

"Custody Related" cases include permanent custody, change of custody, temporary custody, visitation, protective supervision, out-of-home placements and foster care.

REFERRAL REASONS	TOTAL
Custody, Change of Custody or Visitation	2,810
Permanent Custody	116
TOTAL	2,926

JUDICIAL DISPOSITIONS ORDERED:	
Ordered:	
Dismissed	183
Dismissed Without Prejudice	118
Emancipation of Child	179
Motion Granted	508
Motion Denied	187
Motion Dismissed	53
Protective Supervision	25
Termination of Protective Supervision	28
Child Support Ordered	77
Termination/Suspension of Child Support	28
Visitation According to Case Plan	1
Visitation As Agreed by Parties	150
Visitation Granted	128
Visitation Denied	2
Shared Parenting	36
Placement:	
Custody Remain With Parent	10
Temporary Custody	50
Legal Custody	180
Termination of Legal Custody	16
Termination of Temporary Custody	11
Temporary Custody to Children Services	1

This table represents the principal final dispositions ordered by the Juvenile Court. A charge (referral) can have more than one disposition.

MISCELLANEOUS REFERRALS

Miscellaneous referrals pertain to matters brought before the court, which ordinarily do not involve offenses. These matters include various types of motions, consent to marry requests, record expungements, writs, and certifications from other courts. These matters also include unofficial Grandparent Powers of Attorney or Grandparent Caretaker Affidavits. These filings are accepted by the Juvenile Court, time stamped and tracked for one year before they expire. The purpose of these filings is to provide grandparents legal authority to enroll grandchildren in school or take them to medical, dental or psychological appointments/treatment. The grandparents have physical custody of the grandchild, but no change in legal custody occurs. These are honored, as per the law of the State of Ohio.

REFERRAL REASONS	TOTAL
Grandparent 130	189
All Others	11
TOTAL	200

JUDICIAL DISPOSITIONS ORDERED:	
Ordered:	
Dismissed Without Prejudice	3
Emancipation of Child	4
Grandparent CAA/POA Expired	205
Motion Granted	4
Other Disposition	7

ADULT COMPLAINTS

CIVIL COMPLAINTS ON ADULTS

The Court also has jurisdiction over certain civil complaints and motions on adults. This authority includes determining the parentage of and the establishment, modification, enforcement and termination of support for a child. This also includes U.I.F.S.A. (Uniform Inter-State Family Support Act), which pertains to out-of-state support collections.

TYPE OF REFERRAL	NEW COMPLAINTS FILED	MOTIONS FILED	TOTAL
Parentage	463	65	528
Support	1,916	1,355	3,271
U.I.F.S.A.	261	67	328
Total:	2,640	1,487	4,127

ADULT MISDEMEANOR COMPLAINTS

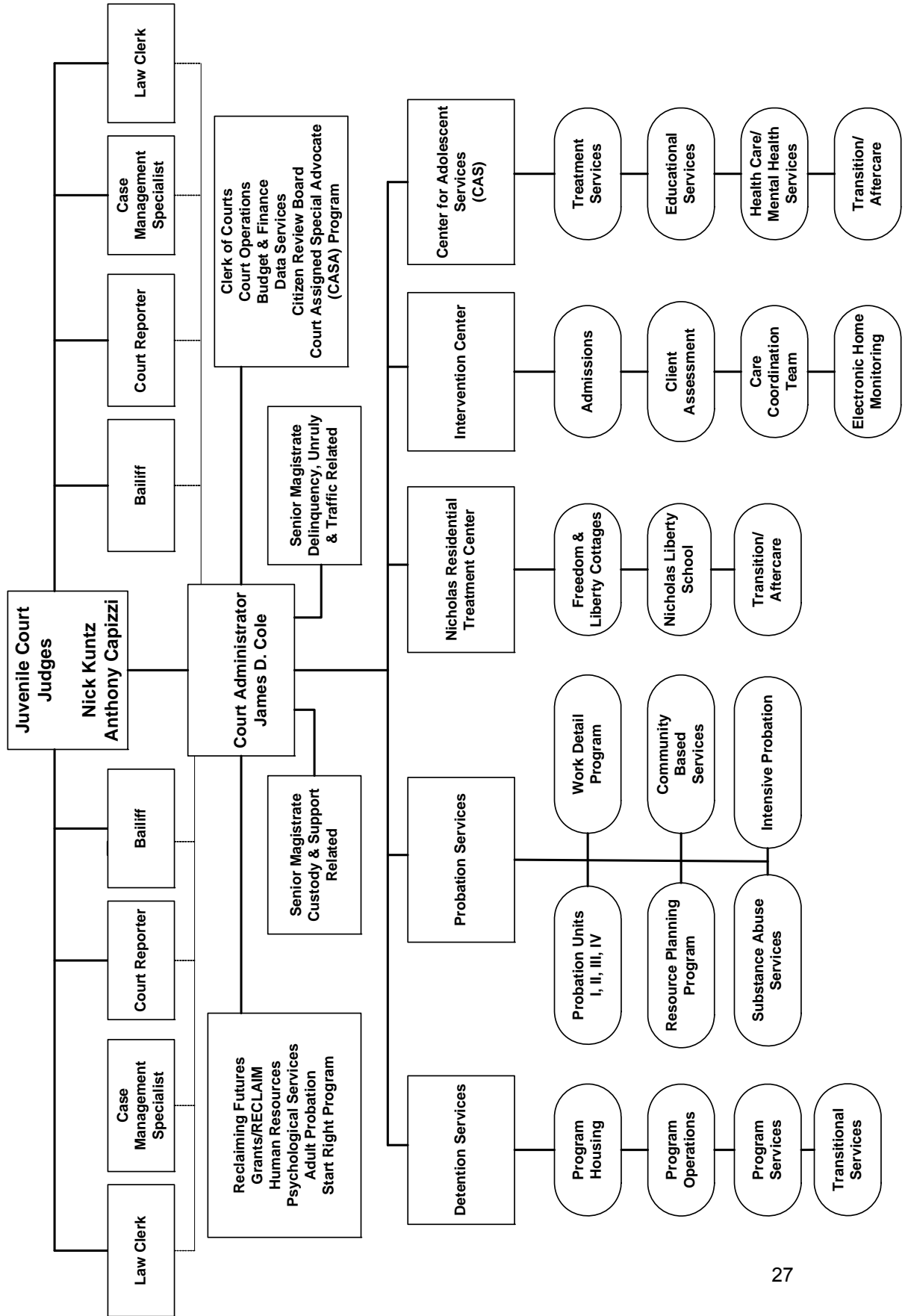
Lastly, the Court deals with misdemeanor complaints involving adults in offenses against a juvenile or with a juvenile. This can include such reasons as incest, physical abuse, sexual abuse, neglect, contributing to unruliness or delinquency, failure to send to school, contributing to the neglect of a child charges, etc.

ADULT CHARGES (REFERRALS) BY TYPE OF CHARGE

CHARGE REASONS:	
Child Endangerment	34
Contributing to Unruliness/Delinquency of a Minor	16
Disorderly Conduct	5
Parental Failure to Send to School (Grades K – 4)	267
Parental Contributing	2
Contributing to Education Neglect of a Minor	52
Interference with Custody	1
Permitting Drug Abuse	1
Domestic Violence	4
Giving Liquor to Minor	1
Total:	383

JUDICIAL DISPOSITIONS ORDERED:	
Ordered:	
Fines	37
Fines Suspended	290
Court Costs	15
Probation Supervision	43
Dismissed	66
Dismissed Without Prejudice	34
Jail Sentence	20
Jail Sentence, Suspended	93
Performance Bond	223
Referred to Project Impact	115

MONTGOMERY COUNTY JUVENILE COURT ORGANIZATIONAL CHART



DEPARTMENTS AND PROGRAMS

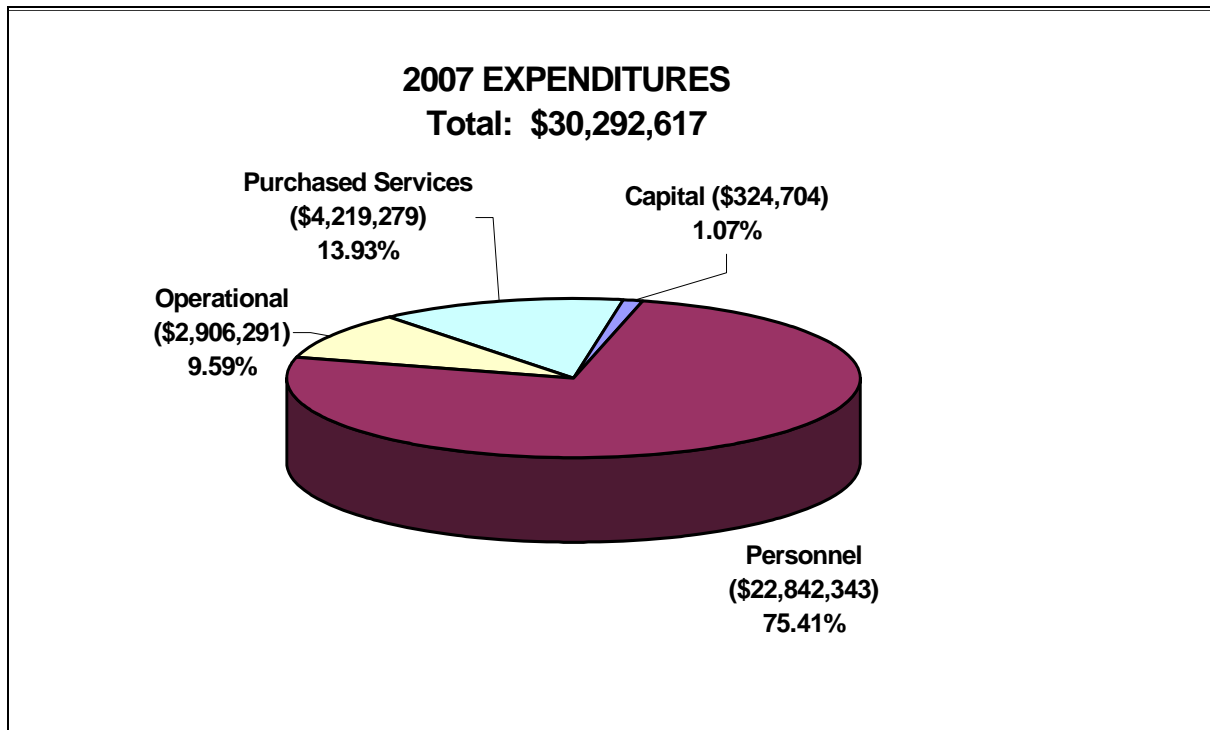
COURT ADMINISTRATION

JAMES D. COLE, COURT ADMINISTRATOR

The Juvenile Court Division has 2 judges and their bailiffs, court reporters, case coordinators, 12 magistrates and 2 senior magistrates, judicial technicians, the Court Administrator and court administration staff. The Judges and Magistrates are responsible for the judicial processing of cases (delinquency, unruly, dependency, abuse, neglect, traffic, custody, parentage, child support, etc.) through their final disposition.

Court Administration is responsible for overseeing the operation of 5 major departments: the Center for Adolescent Services, Detention Services, the Intervention Center, the Nicholas Residential Treatment Center, and Probation Services. It also provides direct supervision over Budget and Finance, the Clerk's Office, Data Services, Human Resources, Grants Coordination, Adult Probation, Psychological Services, Start Right, the Court Appointed Special Advocates Program, the Citizen Review Board, the local Reclaiming Futures Initiative and facility operation.

Presented below are the Court's 2007 yearly expenditures:



ADULT PROBATION

REBEKKAH BREWER, ADULT PROBATION OFFICER

The Adult Probation Officer is responsible for all adult cases involving an adult in an offense against a juvenile or with a juvenile. This officer conducts pre-sentence investigations, monitors the progress of adults placed on probation by the Court and links those adults with needed community services. Such services can include drug and alcohol counseling, sexual abuse counseling, parenting classes, etc.

<u>2007 Investigations:</u>	
New Investigations	18
Closed Investigations	15
Active at End of Year	3
<u>2007 Probation Supervision:</u>	
Beginning Number of Probation Cases	51
New Probation Cases	47
Probation Completed	52
Probation Revoked	6
Total Probation Cases	46
<u>2007 Adult Cases Being Monitored Without Probation:</u>	
Beginning Number	32
New Cases	8
Cases Closed	34
Show Cause Filed	2
Total at End of Year	6

COURT APPOINTED SPECIAL ADVOCATE (C.A.S.A.)

BARBARA BUDDENDECK, PROGRAM MANAGER

The Court Appointed Special Advocate Program trains and supervises adult volunteers to serve as Guardians Ad Litem (GAL) for neglected, dependent and abused children. These volunteers conduct independent investigations, provide written reports to the Court and monitor the child's case as long as it remains in the court system.

Number of Children Served	436
Number of Cases Closed	211

<u>Outcome of Closed Cases</u>	
Returned to parent	99
Legal custody to relative/non-relative	67
Dismissed	9
Adopted	21
Emancipated	11
Transferred out of County	1
Committed to the Ohio Department of Youth Services	0

<u>C.A.S.A. Volunteers</u>	
Active Volunteers	99
Attorneys Providing Pro Bono Services	3

CITIZEN REVIEW BOARD

SHEILA JENKINS, PROGRAM MANAGER

The Citizen Review Board (CRB) was established as an independent arm of the Court to monitor permanency planning efforts in place for children in out of home care. Its mission is to monitor case practice and service planning to achieve positive foster care outcomes for children and their families. CRB volunteers conduct periodic Formal Reviews, Annual Reviews and Semi-Annual Reviews for children on probation and in out of home placements. CRB's monitoring efforts promote timely judicial services and ensures the safety and the medical, emotional and cultural needs of the child until a permanent plan is achieved.

Total Number of Children Served	1,749
Number of Reports Reviewed by Board	3,261
<u>Total Number of Formal Reviews Held</u>	
Formal Reviews	51
Annual Permanency Planning Reviews	<u>385</u>
Total:	436
<u>Board Volunteers</u>	
Volunteers	23
Volunteer Hours Provided	<u>3,312</u>

CLERK'S OFFICE

**JENNIFER A. PETRELLA, CHIEF DEPUTY CLERK
ANNA JAUDON, DEPUTY CLERK SUPERVISOR**

Under the charge of the Montgomery County Juvenile Court Clerk of Courts, Administrative Judge Nick Kuntz, the Clerk's Office is responsible for processing all official filings for the Court. Documents requiring filing are received via mail or in person from several sources. These sources include private citizens, law enforcement, attorneys representing private or agency parties, appointed counsel, and agencies themselves.

The Clerk's Office processes Delinquency, Unruly, Tobacco, Traffic, Adult Misdemeanor, Parentage, Support, Custody, Dependency, Neglect, Abuse, Permanent Custody, Visitation, UIFSA, Judicial Consent Cases, Grandparent Powers of Attorney, Grandparent Caretaker Authorization Affidavits, Objections, Transfers and Appeals. A separate journal is maintained to docket Adoption Placement Agreements, Permanent Surrenders, and Fingerprinting and Photographing Motions and Entries.

As part of case processing, the Clerk's Office has several responsibilities to complete prior to the first hearing of many cases. The Clerks file the initial documentation of the case. This includes the time-stamping and journalizing of the documents in the official Court Docket. Service is prepared to 1) assure legal notification to parties of upcoming hearings; 2) notify persons of required documentation or mandatory appearance at a hearing; or 3) to restrain or detain a person in order for justice to be served. Service documents include summons, subpoenas, warrants, *capias*, orders of apprehension, and temporary restraining orders.

Clerks also perform several on-going, case processing responsibilities. Service production mentioned above, may be necessary at several points in an open case. The receipt or failure of service is also journalized in the Court's docket, along with all official documents in a case, including all Judges' and Magistrates' entries and orders. Other Clerks' duties include mailing the majority of official case documents for the Court and acting as a receiving area for payments of filing fees, bonds, court costs, fines and restitution. Clerks also maintain the 'hard-copy' case files for the Court, complete agency reporting for traffic violations and fingerprints collected, and complete record requests.

The Clerk's Office consists of 22 Deputy Clerks, the Deputy Clerk Supervisor and Chief Deputy Clerk. In 2007, the Clerk's Office filed over 18,000 new cases and reactivations, including complete case coordination on 3,000 traffic citations. Clerks maintained over 78,000 official case jackets and 10 years of social history case jackets. Over 71,000 pieces of mail were sent from the office and more than 2600 warrants and *capias* were issued, both an increase from 2006. The office lowered mailing costs in day-to-day regular and certified mailings as well as through established procedures of bulk mailing, providing a savings of \$6400 to the Court (an increase).

PSYCHOLOGICAL SERVICES

DR. LAURA E. FUJIMURA, COURT PSYCHOLOGIST

This department is responsible for providing psychological evaluation services for referred youths to aid Court staff in case planning. Consultative services are available to assist in determining the best possible dispositional alternative. It is also the responsibility of this department to conduct competency and amenability evaluations, as directed by the Juvenile Court Judges or Magistrates.

PSYCHOLOGICAL SERVICES PROVIDED IN 2007	Male	Female
Initial Studies Completed	9	3
Certifications	4	0
Competency Evaluations	26	4
Competency Updates	1	0
Consultations	6	4
Psychological Reevaluation	1	0

START RIGHT

REBEKKAH BREWER, PROGRAM MANAGER

The Start Right Program, under the direction and administration of Judge Nick Kuntz, is designed to facilitate and monitor all cases referred to the Court for Parental Failure to Send and the more serious Contributing to Educational Neglect. Parental Failure to Send cases arise out of excessive absenteeism of children in grades, kindergarten through fourth grade. In addition, parents who fail to enroll a child in school, regardless of the grade, are now getting charged with Contributing. Start Right staff prepare these cases for court and complete follow-up work which may include home or school visits to ensure a positive change. Parents are plugged into community programming to help solve the problems these families are facing.

Out of the 316 cases received in 2007, the Start Right Program served 655 children. The Start Right Program closed 303 cases, of which 84% were closed successfully. (A case is closed successfully when the student has shown improvement in his or her attendance.) Over 134 referrals were made to community agencies for assistance. The Start Right Program is committed to connecting families to service providers who can help parents deal with the issues that are affecting their ability to send their children to school.

RECLAIMING FUTURES – MONTGOMERY COUNTY, OHIO

CHARLOTTE D. MCGUIRE, PROJECT MANAGER

Montgomery County was one of only 10 sites in the nation chosen in 2002 for a 5-year, 1.25 million dollar grant called Reclaiming Futures. A Robert Wood Johnson Foundation (RWJF) initiative, Reclaiming Futures' (RF) mission is to re-invent the way Judges work with justice workers, treatment providers, community leaders and families to provide services teens need to become successful. As the lead agency since June of 2004, the Montgomery County Juvenile Court, under the active leadership of Judges Nick Kuntz and Anthony Capizzi, has made significant gains and improvements in the quality of juvenile justice and substance abuse treatment services. The shared community vision was to integrate the Reclaiming Futures model within the Court not as a project or program, but an operating philosophy. That philosophy was the catalyst for:

1. Training intersystem staff and developing seamless, strength-based juvenile justice and treatment services;
2. Improving the quality and availability of effective adolescent substance abuse treatment;
3. Developing in-house capability for individualized youth data collecting and reporting;
4. Maintaining strong community support for the Court's work; and
5. Engaging citizens as Natural Helper resources. Natural Helpers are caring volunteers who provide support and encouragement to youth and families and connect them with opportunities and services to bring about positive life changes.

2007 ended the 5-year pilot phase for the Reclaiming Futures model in the 10 community sites. Because of significant research results as documented by the Urban Institute and University of Chicago's Chapin Hall Center for Children research, all ten communities received another two-year grant to continue their work. In addition to the existing sites, three new sites were added in 2008 to the Reclaiming Futures national network. Ten more communities will be added as RWJF works with new national partners to spread the model throughout the United States.

Key highlights for the Court's 2007 RF sustainability plan include, but are not limited to:

- Continued validated alcohol and other drugs (AOD) screening at the Court's "front door", the Intervention Center, and screened 3,547 youth entering the system for delinquent/felony charges. 65% had AOD issues. Continued work on integrated database for the RF model.
- Incorporated Reclaiming Futures' Natural Helper Program within the Court.
- Increased volunteer citizen support for Natural Helping through an ongoing community relations campaign targeting faith, trades, protective services, fraternal and community-based organizations.
- Trained 41 new Natural Helpers for a total of 129 to date.
- Served 167 youth to date through Natural Helper linkages.
- Leveraged \$10,700 in private sector donations for positive youth activities.
- Improved average show rate from 35% to 61% for youth initiating treatment services with support from Court contracted liaison.

CENTER FOR ADOLESCENT SERVICES

DR. RICHARD R. HAMNING, DIRECTOR

The Center for Adolescent Services (CAS) was completed in the fall of 2000 and officially dedicated on May 16, 2001. The facility is located in the Village of New Lebanon, Ohio and is a co-educational secure residential correctional/treatment facility. Currently funded to serve 34 boys and 10 girls, the building is designed with a capacity of 40 boys and 10 girls. During 2007, CAS served 126 youths (100 boys and 26 girls).

This highly structured program provides a safe and secure learning environment for youths adjudicated of a low-level felony. Youths participate in a cognitive-behavioral treatment program stressing pro-social skills, self-discipline, and personal responsibility. Treatment modules target thinking patterns, substance abuse, relapse prevention, understanding one's personal, social and family history, developing new habits of thought and action, values exploration and clarification, restitution and victim empathy. Treatment is delivered through a combination of individual, group and family counseling. In addition, youths must participate actively in a year-round academic program in which credits are earned and transferred to their permanent academic record. Additional services provided for all youths include medical and health services, daily recreation, food services, custodial services, and a program of aftercare.

The average length of treatment is seven months depending upon the needs and responsiveness of each youth. Prior to release each youth enters a transition period during which he or she spends increasing periods of time at home. When released, all youths are required to participate in aftercare for at least 9 weeks.

Below are the statistics for 2007:

	BOYS	GIRLS	TOTAL
Total Admitted	66	18	84
Total Days of Care	19,291	5,002	24,293
Average Daily Population	34.7	8.5	43.2
Average Length of Stay (Days)	193	192	193

Admissions to CAS	BOYS	GIRLS	TOTAL
Age Range:			
12 – 14	5	4	9
15 – 16	29	11	40
17 – 18	32	3	35

DETENTION SERVICES

JIMMIE L. CARTER, DIRECTOR

Detention Services provides a comprehensive program for Pre and Post dispositional youths in a safe and secure environment, while protecting the public safety. The youths range in age from 8 to 18 years. During the youths' stay, staff assists them in developing appropriate coping skills to better deal with daily life situations. Detention Services consists of the 60-bed secure detention facility and Dora Lee Tate Center, a staff-secure 24-bed corrections residential facility.

In January 2008 Detention Services and the Dora Tate Center moved into the new Juvenile Justice Center facility at 380 West Second Street Dayton, Ohio. The new facility has a total of 144 beds, in which 36 beds is for Corrections.

Below are the housing statistics for the Detention Center during 2007:

DETENTION SERVICES	BOYS	GIRLS	TOTAL
Total Detained	1,808	731	2539
Total Days of Care	23,490	6,095	29,585
Average Daily Population	56.39	14.23	70.62
Average Length of Stay	12.99	8.33	11.65

The Dora Tate Center serves adjudicated youth in need of a short term, high impact intervention program. Its behavioral intervention program is based on a "no excuse" approach and focuses on the present behavior.

Below are the housing statistics for the Dora Tate Center during 2007:

DORA TATE CENTER	BOYS	GIRLS	TOTAL
Total Admitted	395	244	639
Total Days of Care	4607	2697	7604
Average Daily Population	11.28	7.53	18.81
Average Length of Stay	11.66	11.05	11.90

School is mandatory for every youth regardless of his/her status in the home school. Academic education is provided through Detention's chartered educational program. The academic program includes reading, math, social science, science, life skills, physical

education and health taught by certified State of Ohio teachers. In addition, specialized tutoring for youths functioning significantly below grade level is provided through the Court's Title One program.

The Transition Specialist Position was developed to provide support services for youths detained in the Montgomery County Juvenile Detention Center. The Transition Specialist serves as a liaison between the youths, the family, the schools, the probation officers and various education and social service agencies. Through the tracking of the Transition Specialist, youth are returning to their home schools at a rate of 66% once released from detention.

Other 2007 accomplishments include:

- Revised Policies and Procedures to reflect the changes in the building design and train staff on policy and procedures changes.
- Began hyper-linking the policies and procedures to the ACA standard to provide accessibility and efficiency to staff.
- Review, revise and develop job descriptions for the entire department to meet the needs of the new facility taking into account the skills, knowledge and abilities that are required.
- Provide control room staff with comprehensive training in the operation of the Integrator security system.
- Assisted in the development the Fire Evaluation policy and procedure for the Juvenile Justice Center
- Developed and carried out effective transition and operations plans for the new 144-bed juvenile facility.
- Assisted in the development of the Key Set Build Workbook for the Juvenile Justice Center.
- Requested and received 100 Individual Education Plans from the local school district for incarcerated youth in which their educational materials were tailored during their detainment.

INTERVENTION CENTER

GREGORY T. SCOTT, DIRECTOR

The Intervention Center (IC) is the 24-hour, 7-day a week centralized intake, screening, assessment and case processing department for all children referred to the Court for delinquency and unruly behavior. Referrals come from a variety of sources including law enforcement, schools and parents. The IC assists law enforcement by providing a place to bring juveniles who may not be released outright and allows the police officers to return to duty more quickly. Regardless of how youths arrive at the IC, services are immediately available.

If a youth's case is to be filed officially, IC staff gathers more detailed information in a timely manner. This can include a CrisisCare Behavioral Health Screen (BHS), any Montgomery County Jobs and Family Services—Children Services Division, (CSD) information, a Dispositional Investigation Report (DIR), a risk/needs assessment (YoLSI), home or school visit, drug test results and hearing recommendations. Throughout this process, referrals for services can be made.

The same information gathering is available for cases handled unofficially. Such cases may be referred out for services including diversion programs, mental health or drug and alcohol counseling and/or treatment, work groups, individual and family counseling and mediation. An IC Case Screening, usually scheduled within 7 to 14 days of referral to the Court, or mediation handles most unofficial cases. The service provider to which a youth and family is referred, reports back to IC as to the cooperation, success or failure of the child and family so that the case may be closed or moved on for further action, as appropriate. In addition, CrisisCare conducts Behavioral Health Screens on all youths admitted to Secure Side IC, and on others when appropriate, after which they may refer the child and family for a full diagnostic mental health and/or AoD (Alcohol or other Drug) assessment. The IC conducts a uniform AoD Questionnaire on all face-to-face contacts with youths having unruly or delinquency referrals. Based upon the responses, a BHS and diagnostic assessment may follow.

The IC also prepares the official delinquency and unruly complaints and case jackets, the sealing of records, and marriage and consent requests. It conducts drug screenings, and is responsible for the Electronic Home Monitoring Program (EHMP). The IC is also home to the Care Coordination Team (CCT) and the DSO (Deinstitutionalization of Status Offenders) Emergency Foster Care Project (DSO/EFC).

The Intervention Center continues to be a successful working model, demonstrating how system and community wide collaboration coupled with openness to positive system change serves the best interests of the children and the community.

IC PROGRAMS & PARTNERSHIPS: Intake/Admissions
 Care Coordination Team
 Children Services
 CrisisCare
 DSO Emergency Foster Care Project
 Electronic Home Monitoring

INTAKE/ADMISSIONS

Referrals to the Court on alleged delinquent or unruly youths all come through the IC. All IC services, including but not limited to Case Screenings, CrisisCare assessments, drug test sampling, counseling, mediation and work program referrals may be available to any youth depending upon the nature of the referral and the particular case. A new case may start with a youth being physically brought in by the police to the Secure Side of IC. Other Secure Side Admissions are for warrants or youths detained from hearings. The IC "Red-Flag" screening is provided for CrisisCare counselors and MCCS staff. CrisisCare interviews and conducts a BHS on all Secure Side IC youths, those who "flag" on the AoD Questions and any others upon request. Other cases may begin with a police report being "mailed-in" when a youth is released to their parent or guardian or a "walk-in" or phone-in by an interested party.

Case Screenings	2,688
DIR/YoLSI Interviews	1,422
Non-Secure Side "Mail-In" Cases	6,431
Non-Secure "Walk-In" Cases	339
Secure Side Admissions	3,053

CRISISCARE

CrisisCare is an Alcohol, Drug Addiction and Mental Health Services (ADAMHS) Board funded branch of Samaritan Behavioral Health, Inc. (SBHI), established to provide crisis services to the residents of Montgomery County. CrisisCare provides a multitude of services to youths seen through the Intervention Center. These youths typically have a variety of identified needs that may include mental health, drug, alcohol, and abuse/neglect and dependency issues. If an initial screening identifies a need, a therapist conducts an interview and obtains collateral information from many sources including family, school, past treatment providers and court records. Based upon these findings, CrisisCare may refer the child for a full diagnostic mental health and/or AoD assessment. In certain cases, these assessments are done at the Court, Probation or in Detention. This expedites the youths being linked to services and provides additional information for Judges and Magistrates hearing the case. CrisisCare also provides case management services to overcome barriers families may face when trying to engage in treatment, as well as crisis services to any youth demonstrating emotional disturbance while detained and coordinates with the Detention therapist on how best to stabilize the youth.

A major change for CrisisCare in 2007 was the addition of the new positions of five (5)

mental health therapists, a psychiatric RN, and a half-time psychiatrist designed to address the expanded needs in the new Juvenile Justice Center and provide an increased range of services.

During 2007, CrisisCare conducted over 3,000 Behavioral Health Screens and completed approximately 800 diagnostic mental health and/or AoD assessments.

MONTGOMERY COUNTY DEPARTMENT OF JOBS AND FAMILY SERVICES-- CHILDREN SERVICES DIVISION

The Children Services Division of the Montgomery County Jobs and Family Services is committed to providing staff to handle referrals coming through IC. Referents include CrisisCare, Probation, Judges and Magistrates, the CCT, as well as IC. Its Intake staff interviews all detained juveniles identified as being in need of their services at the Court, Monday through Friday, and are available by telephone at all other times for active agency involvement and the receipt of alerts about juveniles needing service. For non-detained juveniles, an in-depth investigation is initiated on the first business day following a referral from the IC. This allows Children Services Division referrals to be investigated and acted upon more quickly.

The Children Services Division handled approximately 700 referrals through IC during 2007. Through case management, its staff provides daily consultation, makes appropriate referrals provides additional services as needed and conducts joint home visits.

ELECTRONIC HOME MONITORING PROGRAM

The Electronic Home Monitoring Program (EHMP) provides an alternative to secure detention for appropriate youths. Youths are constantly monitored, subject to urine sampling to monitor drug use and managed via telephone and personal contact, as well as by agreement with certain school systems.

Number of Individual Youths Served	604
Number of Successful Completions During 2007*	504
Number of Unsuccessful Completions During 2007*	117

*[Includes youth on EHM at the end on 2006 who completed the program in 2007.]

CARE COORDINATION TEAM

The Care Coordination Team (CCT), also known as the "10 & Under/Pre-Teen Program", is a specialized intervention/prevention program designed to keep non-adjudicated youths under the age of ten from penetrating further into the juvenile justice system. The CCT consists of an IC Assessment Specialist and an IC Care Coordinator Specialist (CCS), as well as representatives from the Children Services Division and CrisisCare. The Team meets with the youths and their families, develops a multi-agency plan of intervention and provides case management. The Team's proactive approach takes full advantage of the processes already established since the

opening of the IC and enhances the ongoing inter-agency collaboration. It also affords the best opportunity to see that each child and family is engaged in appropriate programs and services with ongoing follow-up for as long as it takes to get the job done.

During 2007 the number of service providers for CCT youths was expanded to include: "Protecting Our Youth" group designed to help children develop peer resistance to drugs and alcohol; an "I Can Tell" program designed to prevent abuse and encourage children to tell an adult if they are witnesses to or victims of abuse; and broadened the scope of home-based services available. The CCT began work on a Parent Resource Center, to be housed in the JJC. This included gathering material and resources that will eventually be displayed for parents to use. The CCT continued with community education, handing out our CCT brochures, presenting to various community groups and beginning work on brochures designed to be handed out to parents.

Number of New Referrals in 2007:

153

DSO EMERGENCY FOSTER CARE PROJECT

The DSO Emergency Foster Care Project [DSO/EFC] identifies status offenders and offenders, where no weapon was involved and no injuries occurred, who are physically brought to the IC and are not in need of and/or not appropriate for secure detainment. This process allows immediate (within six hours) release of these youths to appropriate emergency foster care or therapeutic intervention placements, or home with in-home service referrals. Court "detainment" hearings are held within twenty-four hours. On the rare occasion a child is detained prior to the hearing, this project initiates the release of the child into an alternative placement within twenty-four hours of admission to the IC. This process allows the Court to comply with Federal guidelines for status offenders as to detention. These placement services include emergency foster care and therapeutic intervention placements, which provide more intense services dealing with problems from drug alcohol to mental health to dysfunctional family situations, as well as in-home services when returned home.

Of the youths brought to Secure Side IC during 2007 on unruly only matters, none were held more than 24 hours and, after assessment, 59 were placed in emergency foster care.

THE JUDGE FRANK W. NICHOLAS RESIDENTIAL TREATMENT CENTER FOR YOUTH

DEDRICK HOWARD, SUPERINTENDENT

The Frank W. Nicholas Residential Treatment Center (N.R.T.C.) is a 24-hour non-secure residential facility (24-bed capacity) that provides behavioral interventions for boys, 11 through 17 years of age. Its mission is to provide diverse comprehensive treatment and rehabilitative services to the youth and his family and to end the youth's involvement in the juvenile justice system. Each youth upon admittance to N.R.T.C. and his family are engaged in individual, group and family counseling. The youth additionally has an individualized educational program, participates in work and recreational therapy and is monitored continuously for the effectiveness of all behavioral interventions.

Number of Boys Served in 2007	59
Carried over from 2006	19
New Placements	40
Number of Boys in Program at End of Year	24
Number of Successful Program Discharges	20

In 2007 N.R.T.C continued a Family Reunification Plan aimed at serving the needs of both the youths and their families. This phase of the program focuses largely on the Transitional Services provided to families as each youth completes the residential phase of the program and is transitioning back into the community and home. These services include meeting with the boys in their schools and coordinating academic agendas with the school personnel, along with weekly follow-ups on the status and progress of each youth. Family counseling continues in the community and home of each youth, with a focus of continuing to help the families practice the new skills learned while the youth was in placement, with focuses on time-management, problem resolution, and communication. Providing an ongoing support person and a structured transition from placement, to the community, and eventually to home full-time is proving to help the youth transition from a successful residential treatment experience to a successful return to the community and finally to a functional family reunification.

20 Boys entered the Transition / Aftercare Phase
10 Boys had a successful Transition Phase. Only 4 Boys were unsuccessful.
6 Boys remained in the Transitional Phase at the end on 2007.

PROBATION SERVICES

ERIC J. SHAFER, DIRECTOR

The primary mission of Montgomery County Juvenile Court Probation Services is to provide effective, quality services to both youths and families of Montgomery County, as well as, to protect the citizens of Montgomery County by providing effective case management to youthful offenders placed on probation supervision.

This department has continued its efforts toward providing strength-based, family focused services to the youths and families its staff serve. As a result of this focus on strengths, Probation staff participated in a series of trainings throughout 2007. The trainings included the Strengths Based Perspective, Motivational Interviewing and the 40 Developmental Assets

In 2007, the Probation Services Department received re-accreditation from the American Correctional Association. This department first received accreditation in 1991 and has maintained accreditation since that time. In 2007 this department was audited at 100% compliance with mandatory and non-mandatory standards.

Over the past year the Probation Services Department has continued its efforts to find and provide evidenced based services for the youth and families in its charge. The LIFE program, which connects female probationers to Functional Family Therapy at South Community Inc., has expanded through continued grants from the State of Ohio. The new round of funding has provided an additional Probation Officer, as well as, a new therapist for South Community. In 2008, additional funding will be sought to expand the LIFE program to boys.

In 2007, Probation Services continued to collaborate with community partners in order to provide a broad range of services. A number of community agencies continued to provide services to youths assigned to Probation at the Merrimac site. Daybreak Inc. continued to provide anger management services through their Power Club Program. UMADAOP continued their prevention programming to a wide variety of youths and the Girl Scouts of Western Ohio Buckeye Trails Region continued to provide services to girls and the Southern Christian Leadership Conference continued to work with youths conducting their STAR (Straight Talk About Risks) program.

2007 DEPARTMENTAL STATISTICS

INVESTIGATIONS- are defined as post adjudicated/pre-dispositional cases that are referred to probation services for the purpose of preparing a social history report and appropriate recommendations for disposition.

Investigations

Delinquency		Unruly		Juvenile Traffic		New Investigations in 2007
Male	Female	Male	Female	Male	Female	
180	65	17	22	1	0	285

SUPERVISIONS- are defined as post-dispositional cases that are referred to probation services for ongoing probation supervision.

Supervisions

Delinquency		Unruly		Juvenile Traffic		New Supervisions in 2007
Male	Female	Male	Female	Male	Female	
622	333	177	134	16	14	1,296

AVERAGE DEPARTMENTAL SUPERVISIONS*
AVERAGE DEPARTMENTAL INDIVIDUAL CASELOAD

1,331 YOUTH
31 YOUTH

* THIS FIGURE INCLUDES NEW SUPERVISIONS RECEIVED IN 2007 AND SUPERVISION CASES CARRIED OVER FROM 2006.

DEPARTMENT STRUCTURE

Probation Services is organized into ten units: Geographical Units I, II, III, and IV, Community Based Services (CBS), Resource Planning Program (RPP), Drug Court/Treatment Alternatives for Safer Communities (TASC), Juvenile Court Work Program (JCWP), Intensive Probation Services Unit, and the Transportation Unit.

GEOGRAPHICAL UNITS (Units I, II, III, and IV)

The Probation Services Department continues to be anchored by four geographic units. On the average, these units provided supervision to 90% of youth during 2007. In addition to involving the youths and families in a wide variety of community resources, many of the units link parents to appropriate programming. The average caseload per probation officer working in a geographical unit in 2007 was 37.73

New Supervisions Assigned To Geographical Units

Delinquency		Unruly		Juvenile Traffic		New Supervisions
Male	Female	Male	Female	Male	Female	
597	333	177	134	16	14	1,271

COMMUNITY BASED SERVICES (CBS)

The Community Based Services Unit (CBS) is designed to provide services to youths who are in need of a higher level of supervision. CBS provides casework, work therapy, group-centered activities, job placement, and recreational programming. CBS is able to provide a higher level of supervision as a result of smaller caseloads, which are limited to 25 clients per Probation Officer. CBS collaborates with a number of community and youth serving agencies. The strongest link is with Building Bridges, Inc., which provides work therapy and a number of other pro-social opportunities for youths. Work therapy consists of groups of about 3-5 youths who work in different areas of the community. Examples of these groups are as follows: feeding the homeless, working with animals, landscaping, playing bingo with nursing home patients, interacting with the mentally challenged individuals, and delivering furniture to the needy. The youths are paid a small stipend to perform this type of work, which is designed to give back to the community. Work groups run 6 days a week. CBS operates approximately 30 work groups per week.

Youth Referred to CBS in 2007

Delinquency		Unruly		Total Youth
Male	Female	Male	Female	
42	7	7	6	62

A second component of the Community Based Services Unit is the Residential Alternatives Program (RAP). RAP employs four therapists that work closely with Probation Officers to provide home based therapy and interventions with youths and their families.

Youth Referred to CBS in 2007

Delinquency		Unruly		Total Youth
Male	Female	Male	Female	
12	6	6	9	33

Intensive Probation Services Unit (IPSU)

IPSU is designed to provide intensive supervision and services for at-risk youths who exhibit ongoing delinquent and at-risk behavior at school, home and the community. By providing intensive services to youths one of the primary goals of the IPSU unit is to prevent a youth from being placed out of the home. IPSU has seven specialists that provide intensive case management services, including home and community outreach services (wrap around), group counseling, parent support/education programming, day reporting, after hour monitoring and family outreach programming. These specialists include the following: (2) Sex Offender Treatment Specialists; (1) AoD Specialist; (2)

Gender (female) Specific Specialist; (1) Mental Health Specialist; (1) Education Specialist; (1) General Intensive Specialist. The IPSU Specialists use collaborative community resources (i.e. Intensive Outpatient, Standard Outpatient, etc.) to specifically target substance abuse, mental health issues, sex offending behavior, and delinquent behavior.

YOUTH REFERRED TO IPSU IN 2007

Official		Unofficial		Total Youth
Male	Female	Male	Female	
130	105	0	0	235

Resource Planning Program (RPP)

RPP is responsible for the probation supervision of all youths placed in out-of-home treatment facilities, group homes, and out-of-county foster care homes. On the average, there are approximately 60 youths placed in non-county operated residential placements. One of our many goals is to better understand the family dynamics relevant to the behaviors exhibited by the youths that may have directly or indirectly caused the their Court involvement. RPP is committed to working with families in order to facilitate the transition of youths into placement, ensuring the youths receive the appropriate treatment, and assisting in the transition of the youths back into the community. RPP is responsible for monitoring the milieu and programming component of each individual placement facility. RPP staff members visit these facilities on a monthly basis to meet with each youth, monitor the youth’s progress in treatment, and to inspect the individual facilities. Every effort is made to maintain youths within the community prior to being placed in a treatment facility. As a result, Probation Services utilizes a centralized Formal Review process. The Formal Review Team serves as the central location for referrals of youths needing specialized services including, but not limited to, out-of-home placement. This type of integrated review and treatment planning approach encourages early identification of higher risk offenders in order to develop treatment plans that will impact a youth’s criminogenic behavior with a graduated response, as well as meeting their specific treatment needs.

Youth Referred to RPP for Supervision in 2007

Delinquency		Unruly		Total Youth
Male	Female	Male	Female	
159	64	1	3	227

2007 RPP Statistics	
Number of Youth Screened for Out of Home Placement	499
Number of Youth Placed Out of the Home	137
Types of Placement:	
Residential (Mental Health)	27
Residential (Sex Offender)	12
Residential (Substance Abuse)	57
Specialized Group Home	38
Treatment Foster Home	3
Number of Referrals for Sex Offenders	59
Community Agency Collaboration Involvement:	
Case Reviewed by the Inter-Agency Clinical Assessment Team (ICAT) for planning and funding approval	89
Families served by the Montgomery County Family Stability Program-Diversion	259

Substance Abuse Services

This section contains two programs, Drug Court and F.C.A.P. (Fisher Chemical Abuse Program).

Drug Court:

Drug Court, presided over by Judge Anthony Capizzi, is a separate and specialized docket within the Montgomery County Juvenile Court assisting in the rehabilitation of juvenile offenders who have been adversely affected by drugs and alcohol. Drug Court provides intense services to roughly 100 youths and their families at any given time. The program is individually paced. Depending on the youth's performance and progress, successful completion typically takes nine (9) months, but can take up to two years.

The structure of Drug Court affords an environment in which youths can develop healthy attitudes and values necessary for reducing substance abuse and recidivism. Specifically, Drug Court provides judicially supervised treatment and case management, mandatory random drug testing, community supervision, and the use of appropriate incentives and sanctions. Youths are expected to follow rules of the home, attend school daily, attend all probation meetings, counseling sessions, court hearings, obtain employment (if age appropriate), and become drug free.

By partnering with local agencies, Drug Court connects youths to pro-social activities and programs including sports leagues, summer employment and camps. Furthermore, Drug Court youths are automatically connected to the Natural Helper's program, through Reclaiming Futures. This program uses trained community volunteers as mentors to provide support and encouragement as youths move through the court and recovery processes.

Youth Referred to Drug Court for Supervision in 2007

Delinquency		Unruly		Total Youth
Male	Female	Male	Female	
136	32	24	9	201

Number of Youth Accepted:	110
Number of Youth Graduated:	41
Number of Youth Who Achieved GED or Vocational Certification While In Program:	15
Number of Youth Employed At Graduation:	15
Number of Youth Linked to Natural Helper:	15

Fisher Chemical Abuse Program (F-CAP):

F-CAP is the Court's substance abuse unit. Services include: screening, referral and urinalysis monitoring.

Number of Youth Screened	178
Number of SASSI Assessments Conducted	178
Number of Urinalysis Tests Run	9,134
Number of Individuals Tested	1,420

JUVENILE COURT WORK PROGRAM (JCWP)

The JCWP serves youths between the ages of 12-19. This program provides the opportunity for youthful offenders to learn accountability for their behavior and responsibility to the victims and community, while learning positive work values and habits. JCWP facilitates work groups six days a week, providing day, night, and weekend opportunities. There are four components: Diversion, Community Service, Restitution, and the Student Alternative Program (S.A.P.).

The Diversion component involves first-time, non-adjudicated (unofficial) offenders. Youths are directed by Judges, Magistrates, and Intervention Center staff to complete 8 to 24 hours of community service in lieu of more severe, official consequences.

Program staff and parents develop a supervision plan to complete assigned hours. Successful and timely completion of the assigned community service hours results in the youth's offense being closed unofficially with no further Court intervention. Thus, the diversion component serves as an effective means of preventing youths from further penetrating the juvenile system.

The Community Service component serves all youths adjudicated on official delinquent and/or unruly charges. Judges and magistrates order youths to complete 8 to 24 hours

of community service instead of, in many cases, paying court costs and fines. The Restitution component provides youths with the opportunity to repay their victim(s) for damages or losses sustained as a result of a youth's actions. This component empowers youths who cannot afford to pay the restitution to complete community service hours and receive credit at a set hourly rate. Youths are assigned to work details and are ordered to pay up to \$500.00 per offense. JCWP will repay the victim(s) based on the number of hours completed by the youth.

The S.A.P. Program involves the option of probation officers referring either suspended or expelled youth to complete community service hours until the youth returns to school. The maximum allowable time for each occurrence is 80 hours.

Youth referred to JCWP for Supervision in 2007

Delinquency		Unruly		Total Youth
Male	Female	Male	Female	Supervised
73	54	0	0	127

2007 Juvenile Court Work Program Statistics		
	Restitution	Community Service
Referrals Received	400	1,792
Cases Terminated Successfully	361	1,556
Cases Terminated Unsuccessfully	39	236

Average Length of Time in Work Program	5 WEEKS
Community Service Hours Provided	32,356
Restitution Collected For Payment	\$22,316.92
Restitution Paid From Program Funds	\$66,915.43
Total Restitution Paid	\$89,232.35
Average Restitution Paid Per Victim	\$241.82
Number Of Victims Compensated	369

TRANSPORTATION UNIT

The Transportation Unit consists of (1) Transportation Coordinator and (2) Court Service Officers. While being a component of Probation Services Department, the Transportation Unit directly affects and provides services to the entire Court. The duties of the Unit includes 1) summons delivery to youth and families providing them with official notification of their pending court dates, 2) transportation of detained youths to medical and counseling appointments, 3) transporting youths to and/or from placement facilities within and out of state, 4) transporting youths to and from the airport or bus

station, 5) warrant execution for youths locally and/or certified in from other counties/states and 6) coordinates paperwork for committed youths to go to the Department of Youth Services (DYS) institutions.

The Transportation Unit also provides training to departmental staff regarding the proper usage of mechanical restraints and proper protocol used in transporting youths to and from various locations. We wholeheartedly subscribe to the credo of providing safe and secure transportation with the safety and dignity of the youths being paramount, coupled with the safety and concern for the community and transportation staff.

TRANSPORTATION UNIT STATISTICS 2007

Medical Appointments, Warrant Execution, Facility/Placement Transports, Airport/Bus Station, Youth from Other Counties, DYS Transports	Total Trips 235
Summons Delivery	Total Delivered 5457

DEVELOPMENT OF THE JUVENILE JUSTICE CENTER

In January 1997, Juvenile Court asked assistance from the Montgomery County Criminal Justice Council to examine the issue of detention overcrowding and juvenile bed space requirements. Consultants were hired in July 1997 to assist a subcommittee of Criminal Justice Council members, Juvenile Court staff and other youth serving agencies to undertake this study. On November 17th, the consultants, Dave Bennett and Kit Enniss, conducted a very successful Symposium on Juvenile Detention as a way to educate community agencies and seek input on this issue. More than 100 community leaders from the state, county, city and township government; social service agencies; local courts; local law enforcements; local school board members and administrators; and Juvenile Court staff participated in this symposium.

In addressing the juvenile detention space needs for Montgomery County, the consultants and subcommittee members explored the concept of a 24-hour, 7-day a week intervention center. Under this concept, police departments would have the ability to bring juveniles to the center and immediately return back to the streets to protect the community. The intervention center would integrate agencies that deal with youths at the start of the process by using a red flag assessment system on all youths brought to the Center. These agencies agreed to provide staff who would report directly to the Intervention Center.

Through the support of law enforcement and other child serving agencies within Montgomery County, the Court opened the doors of the Intervention Center on July 13, 1998. Its goals were to front-load services to youths and their families, expedite the flow of unruly and delinquency cases through the court system and reduce the number of youths who require secure detention and/or enter the official juvenile justice system. As a result, the time between the alleged offense and court contact for a juvenile would be significantly reduced.

Since July 1998, the planning for a new juvenile detention facility entered its second phase. During this phase, Montgomery County contracted with Huskey and Associates, Inc. to review bed space projections; facilitate numerous workshops to gain broad-based input from operational and administrative personnel; develop a series of planning, security and design considerations; develop preliminary construction costs, a staffing pattern and projected operational cost to operate this juvenile detention facility. Their report was submitted to the County in May of 1999. Based upon this report, the County agreed to the construction of a 144-bed facility providing secure detention for pre-adjudicated youth, a secure, short-term correction treatment program and an intervention center. Planning continued for the development of the JJC into 2000.

In May of 2000, the team of MBBJ/Ruestschle Architects was selected to plan and design the new facility and draft a Master Plan for the orderly development of the JJC at the selected site of West Second Street and Vista View Drive. The JJC facility design planning continued into 2001. Local, state and federal funding was being used

to construct this facility. On May 24, 2001, Governor Taft presented Montgomery County with a check in the amount of 8.2 million dollars for the building of the JJC downtown. While major State budget cuts translated into the slowing down of the construction of the JJC in 2002, the County Commission stated that this project would move forward.

With the groundbreaking ceremony for the Juvenile Justice Center in August 2004, construction actually began for this new facility. The original plan was to include primarily the Court's Detention Facility and Corrections, Intervention Center and two courtrooms. During this same time period, the County was examining the growing space needs of the other county courts and county departments. Looking at all options, the County decided that the expansion of the JJC design to house all of the Juvenile Court's functions currently in the Family Court Center and the Reibold Building would be the most cost effective. The space in the Family Court Center would meet the needs of the Courts and other county departments and be in close proximity to their operations. With this decision, the Juvenile Court, Public Works and the architects worked together to draw up a re-designed facility plan to accommodate this expansion. With this re-design, construction continued on the JJC. On January 3, 2008, the Montgomery County Juvenile Court officially opened its doors with a ribbon cutting ceremony at the new Juvenile Justice Center (JJC).

JUVENILE COURT PHONE NUMBERS

A recorded job-line is maintained to allow 24-hour access to employment opportunities available within the Juvenile Court. The Job Line phone number is (937) 496-6882.

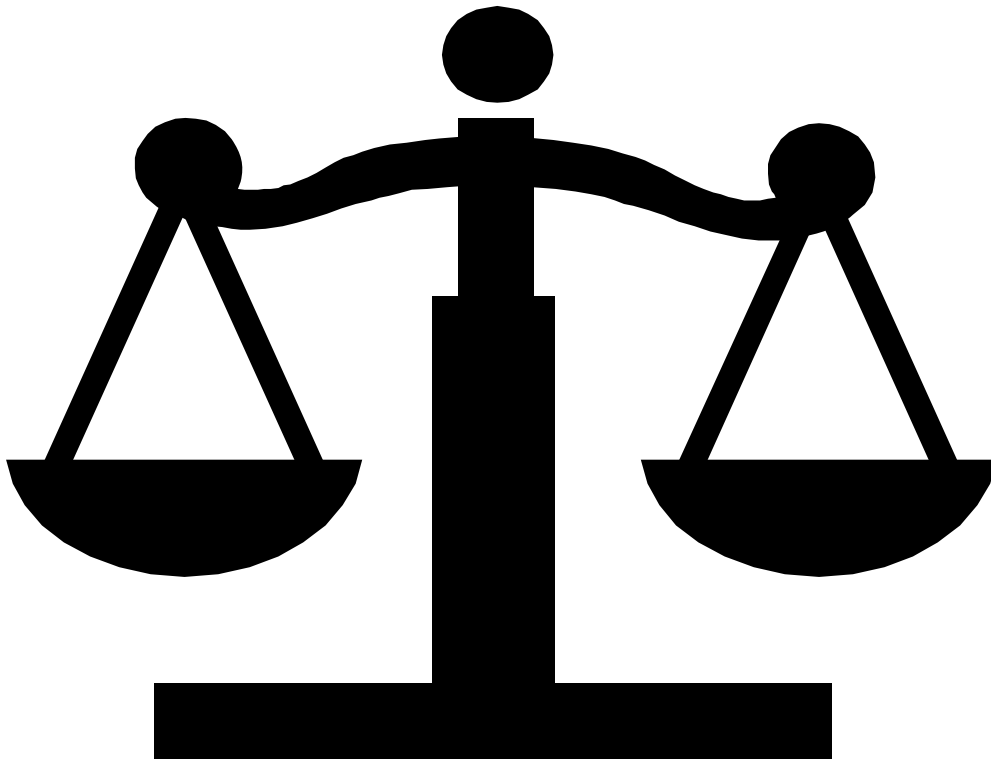
Other important Court numbers include:

Judge Nick Kuntz	(937) 225-4125
Administrative Judge	
Judge Anthony Capizzi	(937) 496-6602
Court Administration	(937) 225-4267
Clerk's Office	(937) 225-4198
	(937) 225-4199
Legal	(937) 225-4250
Center for Adolescent Services .	(937) 687-9427
Detention Services	(937) 496-7324
Intervention Center	(937) 225-4141
	(937) 496-6559
Nicholas Residential Treatment Center . .	(937) 496-7196
Probation Services	(937) 225-4163

Our website is:

<http://mcjc.mcoho.org>

INVEST IN OUR FUTURE



INVEST IN OUR CHILDREN

___ copies at \$___ each